

AUTOMATION

SUPERBAGGER





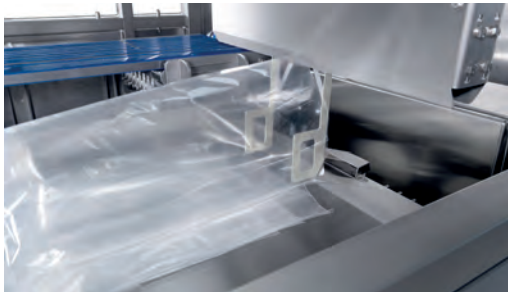
### Touch screen

- ◆ Simple and easy touch-screen operation.
- ◆ 15" color display.
- ◆ Electronic monitoring of the work process and displays in comprehensible and well-arranged on-screen menus.
- ◆ User levels can be blocked via password.
- ◆ Definition of different bag dimensions.
- ◆ Control of access to the machine.

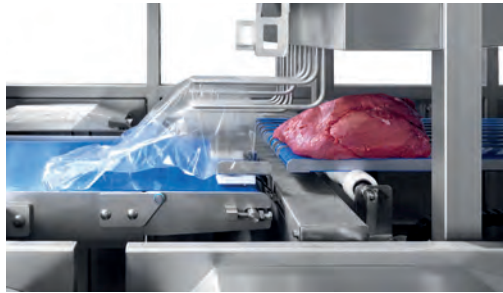
### Your benefits

- ◆ Rugged stainless steel construction for maximum durability.
- ◆ Irregularly shaped products such as fresh meat can be filled into bags automatically.
- ◆ Automatic selection from 6 different bag sizes.
- ◆ Reduces labor and improves food safety in the packaging area.
- ◆ Touch screen for easy operation.
- ◆ Use of tried-and-tested electronics and pneumatics components.
- ◆ Hygienic design – easy to clean.
- ◆ Control box heating

# SUPERBAGGER



After product measurement, the optimal bag is transported by means of a Cartesian **axle/gripper system** from the bag dispenser to the transition on the finger belt.



Thanks to a **special tensioning system**, the bags are stretched to match the shape of the products exactly. This allows for the selection of optimal bag sizes; the use of oversized bags is minimized.



**Rotary table** including housing. Every second product is rotated 180° and can thus be optimally prepared for loading into the belt machine so that the bag ends are always facing outward.



**Curved conveyor belt** including housing. Connection between rotary table and corner transfer unit.



**Corner transfer unit** including control box and sensors designed for loading the belt machine on one or both sides.



In the **bag drawers**, the selected bags are kept ready for collection.

## Standard equipment

- ◆ Touch screen control.
- ◆ Precise 3-D product scanner for measuring the products.
- ◆ Finger belt for the filling of the bags.
- ◆ Conveyor belts for the transport to and from the finger belt.
- ◆ 6 bag dispensers.
- ◆ Cartesian axle/gripper system.
- ◆ Stable frame design.

## Options

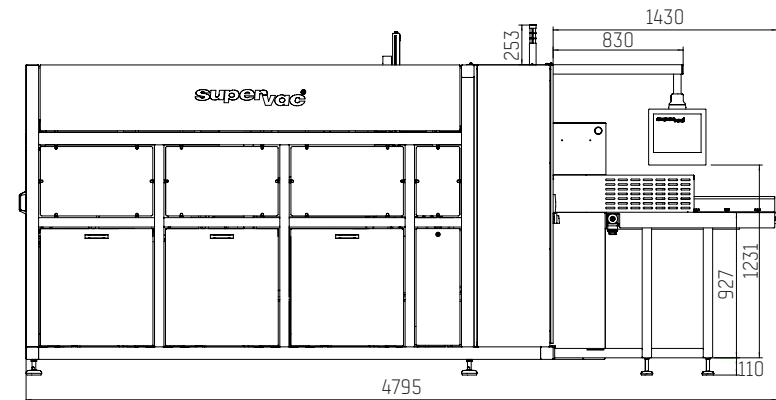
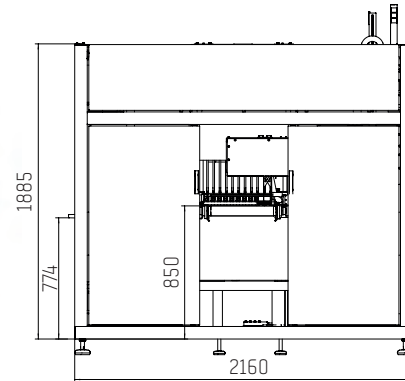
- ◆ Rotary table including housing.
- ◆ Curved conveyor belt including housing.
- ◆ Corner transfer unit including control box.

*Superbagger – Automatic packaging in vacuum bags in an industrial environment*



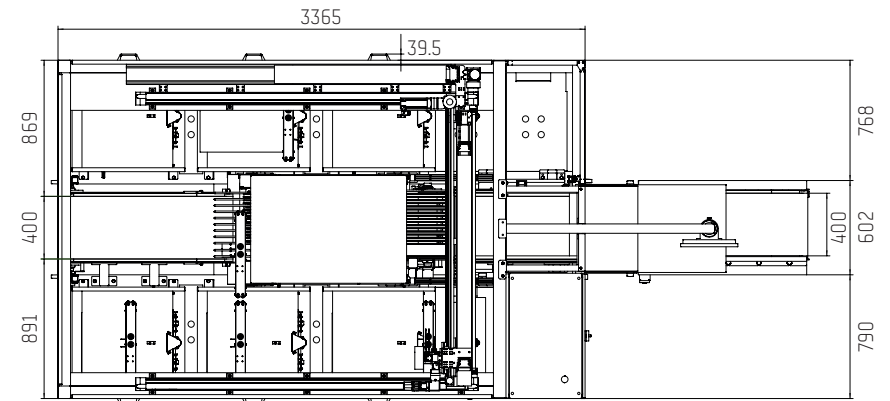
*Constructed of corrosion-resistant stainless steel.  
Easy-to-clean, hygiene-friendly machine design.*

# SUPERBAGGER



## Technical data

Number of bags that can be used at the same time	6
Max. bag width	550 mm
Max. bag width	200 mm
Increments of width	in mm steps
Max. bag length	1000 mm
Min. product width	80 mm
Max. product width	350 mm
Min. product length	150 mm
Max. product length	700 mm
Min. product height	50 mm
Max. product height	180 mm
Max. product weight	20 kg
Output	max. 25 packages per minute
Compressed air consumption	380 NLPM 6 bar
Power supply	6 kW
Total weight	2,750 kg







**supervac**   
FIRST CLASS PERFORMANCE

**Supervac Maschinenbau GmbH**  
Kalterer Gasse 10  
2340 Mödling | Austria

**T:** +43 2236 50 25 00

**E-mail:** [office@supervac.at](mailto:office@supervac.at)  
**Web:** [www.supervac.at](http://www.supervac.at)